

52. SYSTEMATIC POSITION OF *TEUCRIUM TANANICUM* MAIRE (LAMIACEAE), RARE ENDEMIC SPECIES FROM THE MOROCCAN HIGH ATLAS.

Teresa NAVARRO & Jalal EL OUALIDI

Posición sistemática de Teucrium tananicum Maire (Lamiaceae), raro endemismo del Gran Atlas (Marruecos).

Key words. *Teucrium*, Morocco.

Palabras clave. *Teucrium*, Marruecos.

Teucrium tananicum Maire is a Moroccan endemic species from the Ida-ou-Tanane mountains (High-Atlas). It was described by Maire (1932) under the section *Polium* (Mill.) Schreb. of genus *Teucrium* L., and placed by Jahandiez & Maire (1934) with the taxa from subsection *Rotundifolia* Cohen ex Valdés Berm. & Sánchez Crespo, by the presence of the indumentum with simple hairs, leaves subcordates at the base and corolla very exert to the calyx tube. Cohen (1956) considered *T. tananicum* out to the subsection *Rotundifolia* by the presence, in some cases, of branched hairs in the flowers and it is placed under the subsection *Intermedia* Cohen (nom. illeg) (Cohen, loc. cit.)

In the course of a revision of several species of section *Polium* (Mill.) Scherb. from

Morocco, we have tried to determine their correct infrageneric position. After examination of the type material and specimens from MPU and RAB, it is clearly evident that *T. tananicum* includes the following typical morphological characters: presence of a corolla with the under developed lateral lobes, convex central lobe and the subulate and horizontal latero-posterior lobes the leaves ovated-subtriangular, subrotundated at the base, dense villous and peciolate; calyx tubular-campanulated without carpostegy, bilabiated with acute lowers teeth and inflorescence in dense verticillasters like terminal spike. These features segregating *T. tananicum* as a distinct section to the section *Polium* and rather belongs in the section *Isotriodon* Boiss. subsection *Isotriodon* Kästner (Kästner, 1989) (tab. 1).

	<i>T. sect. Polium</i> subsect. <i>Rotundifolia</i>	<i>T. sect. Isotriodon</i> subsect <i>Isotriodon</i>
Corolla	oblongue lateral lobes; latero-posterior oblongue lobes are lanceolated and long	under developed lateral lobes; latero-posterior lobes are subulated and short
Leaves	oblong, subrotundated	oval-deltoided to subtriangular
Inflorescence	racemose in a terminal flower-heads never spike like	not racemose, oval to cylindrical spike like of dense verticillasters

Table 1. Morphological characters of subsection *Isotriodon*, present in *T. tananicum*, related to subsection *Rotundifolia*. Caracteres morfológicos comparativos con la subsección *Rotundifolia* de *Teucrium tananicum*.

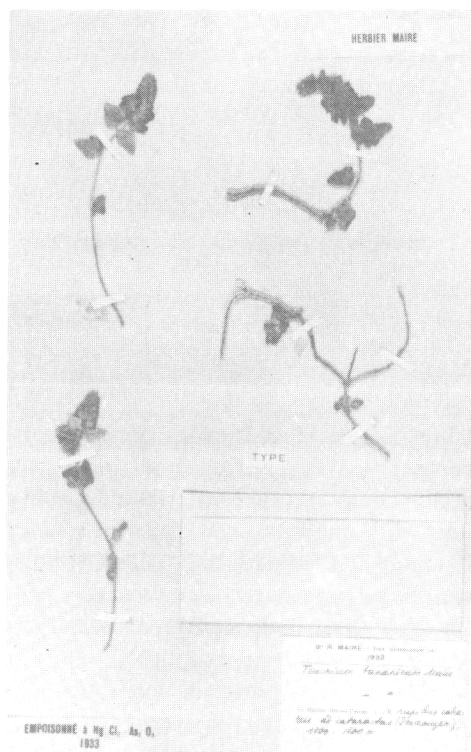


Figure 1. Original material of *Teucrium tananicum* Maire. *Material original de Teucrium tananicum* Maire

Teucrium tananicum Maire in Bull. Soc. Hist. Nat. Afrique N. 23: 210. 1932

Original material: MPU-MAIRE, LT: Dr. R. Maire / Iter Maroccanum XXII // 1932 // *Teucrium tananicum* Maire // In ditone Ida-ou-Tanane / in rupibus calca-/reis ad cataratas (Immouzer) / 1100-1200m // die 18 mai. The lectotype here designated is the upper left specimen of the sheet.

Stems branched dense villous with patent, simple and glandular hairs. Leaves at 2,5 cm petiolated, very reticulated in both faces, ovate to subtriangular, obtuse, subcordated at the base, margins entire crenated, adpressed and dense grey villous indumentum in the upper part and white tomentose in the lower part. Bracts lanceolate, entire, acuminate. Calyx 6 mm, tubular-campanulate, nerviation reticulate; bilabiated, the lower teeth are triangular-acute. Inflorescence in terminal, oval to

cylindrical spike like of dense verticillastres. Corolla white, exert to the calyx tube, with the shorter lateral lobes, convex central lobe and horizontal and subulated latero-posterior lobes.

Ind. loc.: Hab. in Atlantis Majoris occidentalis ditone Ida-ou-Tanane.

Illustration: Fig. 1.

Distribution and ecology: Endemic from Morocco. High occidental Atlas; Immouzer of Ida-ou-Tanane (Igherm to Içafen). Over calcareous and sandy cliffs from 1200 at 1700 m.

The subsection *Isotriodon* is present in Morocco by *T. tananicum* and *T. rupestre* Cosson & Balansa endemic species from Occidental Morocco, and it is not present in the Iberian Peninsula and Algeria. *T. rupestre* differs from *T. tananicum* mainly by the presence of bullated leaves, shorter petiolated and glabrous in upper part and the calyx subgibbous at the base.

The morphology of the corolla with one developed and very exert lower lips formed by the shorter lateral lobes, narrow and convex central lobe and the horizontal latero-posterior lobes, related this species with the section *Chamaedryis* Boiss. The inflorescence type in dense verticillastres grouped in a spike like to the terminal receme related these taxa with the section *Scorodonia* subsection *Stachyobotrys* (Hill) Kästner (Kästner, loc. cit.).

REFERENCES

- COHEN, E. -1956- Contribution à l'étude des *Teucrium* marocains de la section *Polium*. *Trav. Inst. Sc. Chérifien. Sér. Bot.*, 9: 3-85. Rabat.
- KÄSTNER, A. -1989- Übersicht zur systematischen Gliederung der Gattung *Teucrium* L. *Biocosme Mésogéen*, 6(1-2) 63-78. Nice.
- MAIRE, R. -1932- Contribution à l'étude de l'Afrique du Nord. *Bull. Soc. Hist. Nat. Afrique N* fascicule 19, N. 23: 210. 1932.
- JAHANDIEZ, E. & MAIRE, R. -1934- *Cat. pl. Maroc*, 3: 617 (1931-1941). Alger.

Aceptado para su publicación en Mayo de 1996

Dirección de los autores. T. Navarro: Dpto. Biología Vegetal. Facultad de Ciencias. Apdo. 59. 29080, Málaga. Fax. (95) 213 19 44 E-Mail: Botanica@ccuma.sci.uma.es. J. El Oualidi: Institut Scientifique. Université Mohammed V. BP 703, Maroc.